



COMPACTOR PLATE

**TOP QUALITY
AVAILABLE
FROM STOCK**

- » • Double eccentric
- Built-in pressure relief valve and oilflow-block
- Optimum protection of hydraulic hoses
- Can be used for soil compaction as well as for penetration of posts



**3 years
warranty**



Pladdet



Pladdet bv
Paulinaweg 6-10
4521 RE Biervliet
The Netherlands

Tel. 0031 115 - 48 13 51
Fax 0031 115 - 48 20 54

Mail: info@pladdet.nl
Website: www.pladdet.biz

www.pladdet.biz

Hydraulic compactor plate



Pladdet Compactor plates are designed for max. force with the exact proportions of amplitude and vibration frequency necessary to generate the most effective centrifugal force.

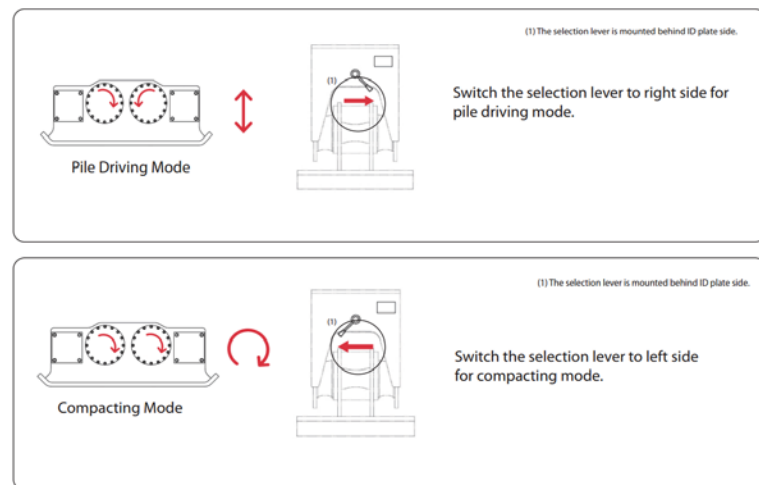
In 2017 we have given the compactor line a major update and the most popular models (from 4 to 18 ton machines) are now available with double eccentric. Due to this the units are much more stable and also operate on higher frequency. (3000rpm!)

They can be used for:

- Driving pile, wood and aluminum sheering, fence posts, guardrail posts, rail and I-beams, piling and seawalls, etc.
- Soil and aggregate compaction.
- Breaking up frozen coal, salt, etc.
- Extracting piling and sheeting

The new PCP3 compactor plate has two different operating modes:

1. Pile driving mode -> driving in piles
2. Compacting mode -> soil compaction



The new PCP2 and PCP3 work on single pressure circuit with pressureless return as fitted standard on any excavator. Though the best option is to adjust the machine so the return goes directly to hydr. tank. Make sure the machine does give the minimum required oilflow in order to make sure the compactor plate is working in its optimum frequency.

All plates are supplied with a flow and pressure reduction block so that the hydraulic flow from the machine can be adjusted without having to tamper with the machines hydraulic system.

TYPE	PCP30	PCP2	PCP3	PCP210
Machine class (ton)	2.5 – 4	4 – 8	9 – 18	18 – 24
Baseplate (lxw)	400 x 700	480 x 680	570 x 900	800 x 1200
Weight (kg) ex topplate	105	280	450	635
Centrifugal (kg)	632	4200	9300	8370
Frequency (tr/min)	2200	3000	3000	2100
Required oil flow (l/min)	25 – 36	40 – 90	100	160 – 220
Operating pressure (bar) advised - max	140 – 180	150	150-250	140 – 180